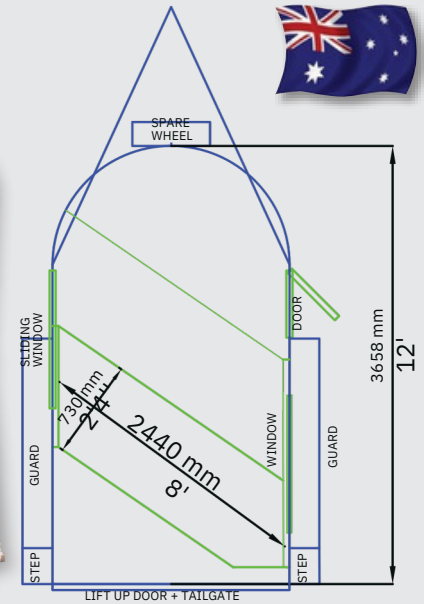




Dimensions

LENGTH	(internal)	12"
WIDTH	(internal)	6"6"
HEIGHT	(internal)	7'5"
WEIGHT	(unloaded)	1360kg
RATED	(loaded)	3000kg
Bay Length		8'
Bay Width		2'4"
Recommended Maximum Horse Size		17.3hh



"Being able to slide the dividers over easily is perfect for us" Wendy VIC

Standard - Inside

- 2x pop-up roof vents
- Padded Divider/s
- FlexiTravel Slide Adjustable Divider System to adjust bay size & to have dividers away with tailgate closed
- Angle Load Swing-Away Head dividers between each bay
- Internal LED strip lighting
- SuperGrip Sealed Rubber on the Floor & Tailgate
- Australian Galvanised Steel for almost all steelwork
- Australian Kilndried Hardwood Floorboards for all horse area

Standard - Outside

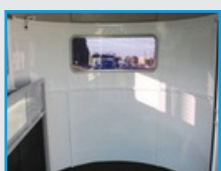
- White Automotive Paint & Automotive Sealant for washing inside / out, graphics front, sides & tailgate
- Tinted Curved Front Window
- 1x RHS Tinted Sliding Side Window with flyscreen
- 1x LHS Tinted Sliding Side Window with flyscreen
- 1x LHS Flush Mount Side Tie
- 1x RHS Flush Mount Side Tie
- Aluminium Package - covered A-frame, corner stays, guards, rear steps, extended height around front
- 1x RHS Personal Access Door with Lockable Flush Mount Door Handle & gas strut
- Heavy Duty Swing-Away Jockey Wheel
- Spare Wheel mounted on front

Standard - Outside (Rear)

- 4'7" Extended Height Tailgate, comes with Easylift Gas Strut Operation, 2x handles & adjustable latches
- Lift-up Rear door above the tailgate, with Easylift Gas Strut Operation
- TempFlow Bracket on Lift-up Rear Door for travelling with the Lift-up door ajar
- LED Trailer Lights (Brakes, Indicators, Parkers)

Standard - Outside (Underneath)

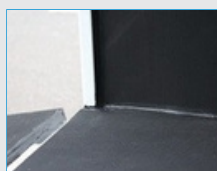
- Rocker Roller Suspension for smooth ride
- Sunraiser Wheels with light truck tyres
- Breakaway System



Spacious Open Front



Sliding Side Window



Anti slip rubber floor



FlexiTravel Adjustable Dividers



Rear Barn Door



LED Strip Lighting