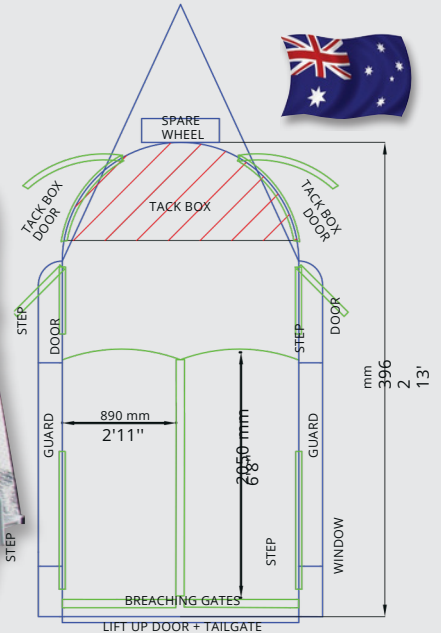




## Dimensions

LENGTH (internal)	13
WIDTH (internal)	'
HEIGHT (internal)	6'
WEIGHT (unloaded)	1430kg
WEIGHT (loaded)	2000kg
Bay Length	5
Bay Width	
Recommended Maximum Horse Size	17.3hh



**"I'm so happy that my two horses are travelling well together again, the extra space stopped our mare from scrambling" Jules WA**

### Standard - Inside

- Saddle Pole x 2
- Front Tack Box with external access comes with 3x bridle hooks per access door
- 2x pop-up roof vents
- Padded Centre Divider/s
- Side Walls with Rubber & Padding
- Adjustable Height Chest Bars, Curved, Removable & Padded
- Deep Auto Latched Breaching Gates, Padded, and able to be held in open position
- Internal LED strip lighting
- SuperGrip Sealed Rubber on the Floor & Tailgate
- Australian Galvanised Steel for almost all steelwork.
- Australian Kilndried Hardwood
- Floorboards for all horse area

### Standard - Outside

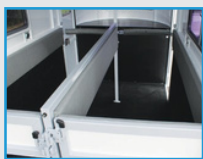
- White Automotive Paint & Automotive Sealant for washing inside / out, graphics front, sides & tailgate
- Tinted Curved Front Window
- 1x RHS Tinted Sliding Side Window with flyscreen
- 1x LHS Tinted Sliding Side Window with flyscreen
- 1x LHS Flush Mount Side Tie
- 1x RHS Flush Mount Side Tie
- Aluminium Package - covered A-frame, corner stays, guards, rear steps, extended height around front
- 1x LHS Tackbox Door with Lockable Flush Handle, Gas Strut & Saddle Pole Bracket
- 1x RHS Tackbox Door with Lockable Flush Handle, Gas Strut & Saddle Pole Bracket
- 1x LHS Personal Access Door with Lockable Flush Mount Door Handle & gas strut
- 1x RHS Personal Access Door with Lockable Flush Mount Door Handle & gas strut
- 1x LH Side Step, 1x RH Side Step
- Heavy Duty Swing-Away Jockey Wheel
- Spare Wheel mounted on front

### Standard - Outside (Rear)

- 4'7" Extended Height Tailgate, comes with Easylift Gas Strut Operation, 2x handles & adjustable latches
- Lift-up Rear door above the tailgate, with Easylift Gas Strut Operation
- TempFlow Bracket on Lift-up Rear Door for travelling with the Lift-up door ajar
- LED Load Lighting on Lift-up rear door
- LED Trailer Lights (Brakes, Indicators, Parkers)

### Standard - Outside (Underneath)

- Rocker Roller Suspension for smooth ride
- Sunraiser Wheels with light truck tyres
- Breakaway System



Breaching Gates



Large Side Windows



Lift Up Door



Tackbox with 2 xTack Doors & 2 PA Doors



Inside



Low Side Steps

This model also comes standard with: 2x Roof Vents / Breakaway.